

COMPANY PROFILE

SARV POLYTECH, is an Indian company engaged in manufacturing of masterbatches, additives and compounds for the plastic processing industry, since 2010. Within shortest possible time various reputed companies in India and abroad showed confidence in our products.

Our world class manufacturing, product development and application facilities are located in Bhiwadi (Rajasthan), India with a total annual manufacturing capacity of over 20,000 MT. A company with strong global aspirations, we have already made our presence felt in the Indian market.

Promoters of Sarv Polytech are engaged in polymer processing industries since 1999 in manufacturing of quality PVC compounds, PVC masterbatches and PVC crystal for wires and cables, footwears, PVC profiles and PVC transparent sheets.



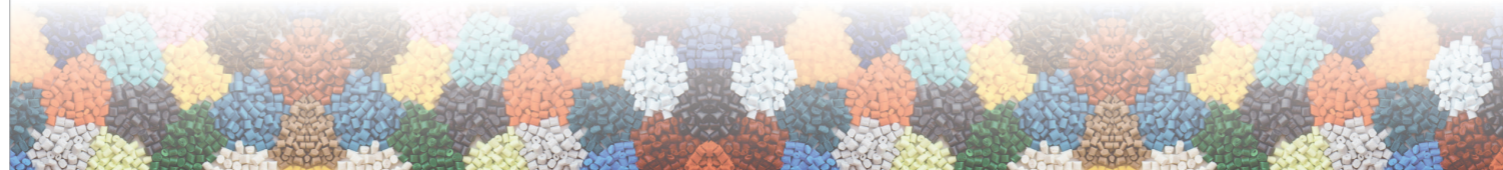
INFRASTRUCTURE

Our extensive manufacturing facilities include two manufacturing units in Bhiwadi & Rajasthan, consisting of state-of-art production lines employing advanced manufacturing technology to produce premium quality products.

FEATURES

Attain and maintain leadership status in our chosen field of business :

- The compounding lines include fast, high capacity twin screw extruders line, specifically designed high speed mixers and kneading mixers which ensures consistent product quality, and improved productivity.
- Extensive and well laid out raw material and finished goods stores.
- Separate facility for building Black Masterbatches to ensure clean environment and eliminate cross contamination.
- We have always believed in investing in efficient technologies that focus on high quality and cost-competitive manufacturing.



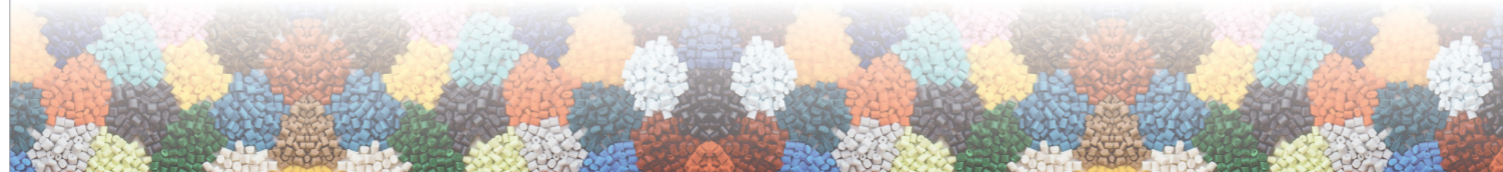
COMMITMENT TO QUALITY

We have sophisticated quality control facilities with ISO certification.

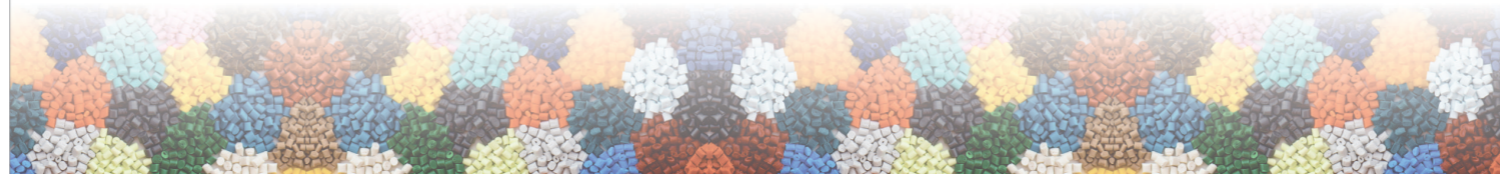
All production batches are subjected to process ability tests for a wide range of critical performance properties. These tests are done on standard processing equipments in the laboratory, simulating actual processing.

ADVANCED TESTING FACILITIES

- Melt Flow Index - Tester
- Computerized Spectrophotometer
- Lab Mixer
- Single Screw Lab Extruder
- Blown Film Extruder
- Injection Holding Machine
- Oven and Muffle Furnace



SARV RISING VALUE CHART



SARV CLIENT CHANNELS

We work with our clients in all the relevant channels

Sarv's R&D team supports client's R&D by providing the chemical properties for the product they develop



Sarv's technical service team guides clients production teams on how to improve their production efficiency using our formulas

Sarv's sales and customer service teams provide competitive prices and efficient deliveries



PROCESSES WE SERVE

BLOWING

INJECTION

ROTO
MOULDING

EXTRUSION



OUR CARRIERS BASED ON GRANULE / MICRO-GRANULE FORMS

- PE (HDPE/LLDPE/LDPE)
- PP
- PS
- PC
- PET
- ABS/SAN/ASA
- EVA
- PA
- TPU



SARV

Masterbatches



PRODUCT RANGE

PRODUCTS - COLOR MASTERBATCH

WHITE MASTERBATCH



HIGH CAPACITY
SUPERIOR QUALITY
TAILORED SOLUTIONS

COLOR MASTERBATCH



CLOSE TO THE MARKET
WIDE RANGE
CUSTOMIZED SOLUTIONS

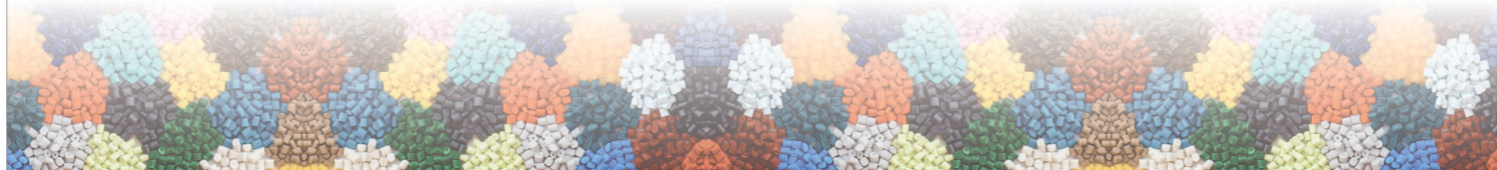
BLACK MASTERBATCH



WIDE RANGE
ENGINEERED POLYMERS
CUSTOMIZED SOLUTIONS

PRODUCTS - ADDITIVES

- OB
- UV
- DESICANT
- PEARL
- FR
- PPA
- ANTI-OXIDANT
- LIGHT DIFFUSER
- ANTI-BLOCK
- ANTI-SLIP
- SLIP
- ANTI-STATIC
- LASER MARKING



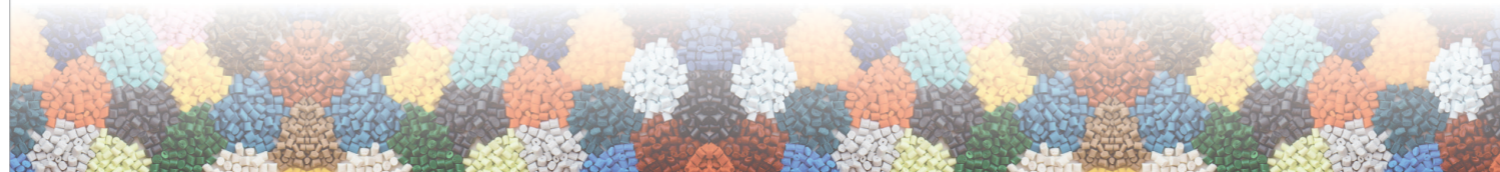
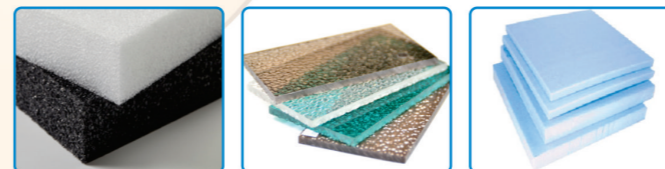
MASTERBATCH FOR AGRICULTURE APPLICATIONS

- GREENHOUSE FILMS
- MULCH FILM
- NON-WOVEN
- TARPAULIN
- SHADE AND MESH NETS
- BALE NETS AND TWINES



MASTERBATCH FOR BUILDING & CONSTRUCTION APPLICATIONS

- CONSTRUCTION FILMS
- XPS SHEETS
- PIPES & FITTINGS
- PP CORRUGATED SHEETS
- PE FOAMS
- PC & GPPS SHEETS
- SOLID SHEETS



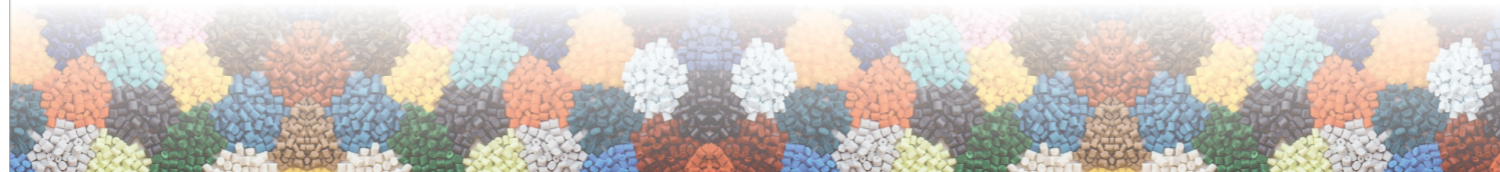
MASTERBATCH FOR PACKAGING APPLICATIONS

- **FOOD :**
SHELF STABLE
REFRIGERATED READY MEALS
PET FOOD
- **BEVERAGE PACKAGING :**
CAPS & CLOSERS
MILK
- **PERSONAL CARE & COSMETICS**
- **PROTECTIVE FILMS**



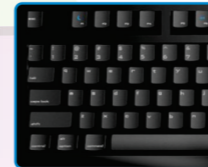
MASTERBATCH FOR HOME, SPORT & LEISURE APPLICATIONS

- HOME APPLIANCES
- TOYS
- OUTDOOR FURNITURE
- STADIUM SEATS
- ARTIFICIAL TURF



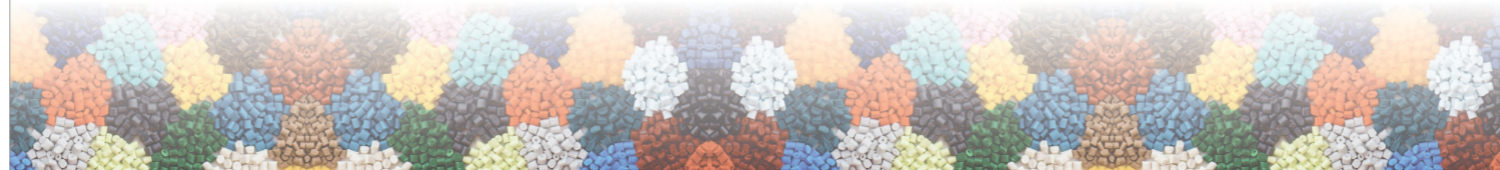
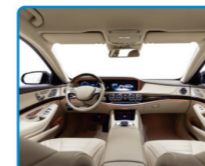
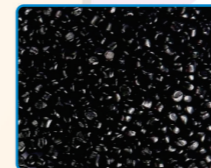
MASTERBATCH FOR ELECTRICAL & ELECTRONICS APPLICATIONS

- WIRE & CABLE
- ELECTRONIC COMPONENTS
- LED & LIGHTING HOUSING



MASTERBATCH FOR AUTOMOTIVE APPLICATIONS

- INTERIOR
- EXTERIOR
- UNDER THE HOOD



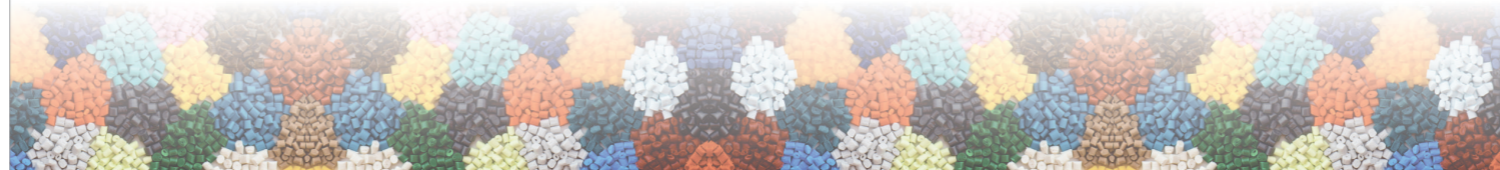
MASTERBATCH FOR TEXTILE & FIBRE APPLICATIONS

- NON WOVEN
- RAFFIA
- POLYESTER & PP YARN



ADVANTAGE SARV MASTERBATCH

- Excellent dispersion and higher pigment loading results in cost saving due to lower addition levels
- Consistent, high quality colours
- Stability with no flying of pigments
- Excellent miscibility
- Conductive to cleaner and safer environment
- Easy to handle
- Very cost effective with good price benefit ratios
- Available in smaller lots also
- Splendid Technical Support
- Prompt delivery





 **SARV**
Masterbatches